



BioPhase 8800 system

TAKE **CHARGE**

Multiply your results.
Multiply your success.

Introducing the **SCIEX**
BioPhase 8800 system



The Power of Precision

BioPhase 8800 system

Innovated from the ground up, the SCIEX BioPhase 8800 system helps biopharmaceutical labs take charge of their development pipelines. Scientists can now assess molecular liabilities more quickly, allowing rapid developability assessment to streamline the selection of candidates to be progressed into an effective therapy.

Robustness

Designed for robustness, hardware and software advances ensure repeatability and increased reliability.

Flexibility

Flexible for your workflow requirement, switching between UV and LIF detection is simple and seamless. Integrated detection modules make it easy to go from one assay to the next, without sacrificing consistency or performance.

Software

Reimagined software makes getting results quick and easy. Simple drag-and-drop functionality for method and sequence creation complements innovative data analysis, to accelerate characterization from start to finish.

Compatibility

96 well plates are designed to ANSI/SLAS standards and are conveniently compatible with commercial liquid handling systems.



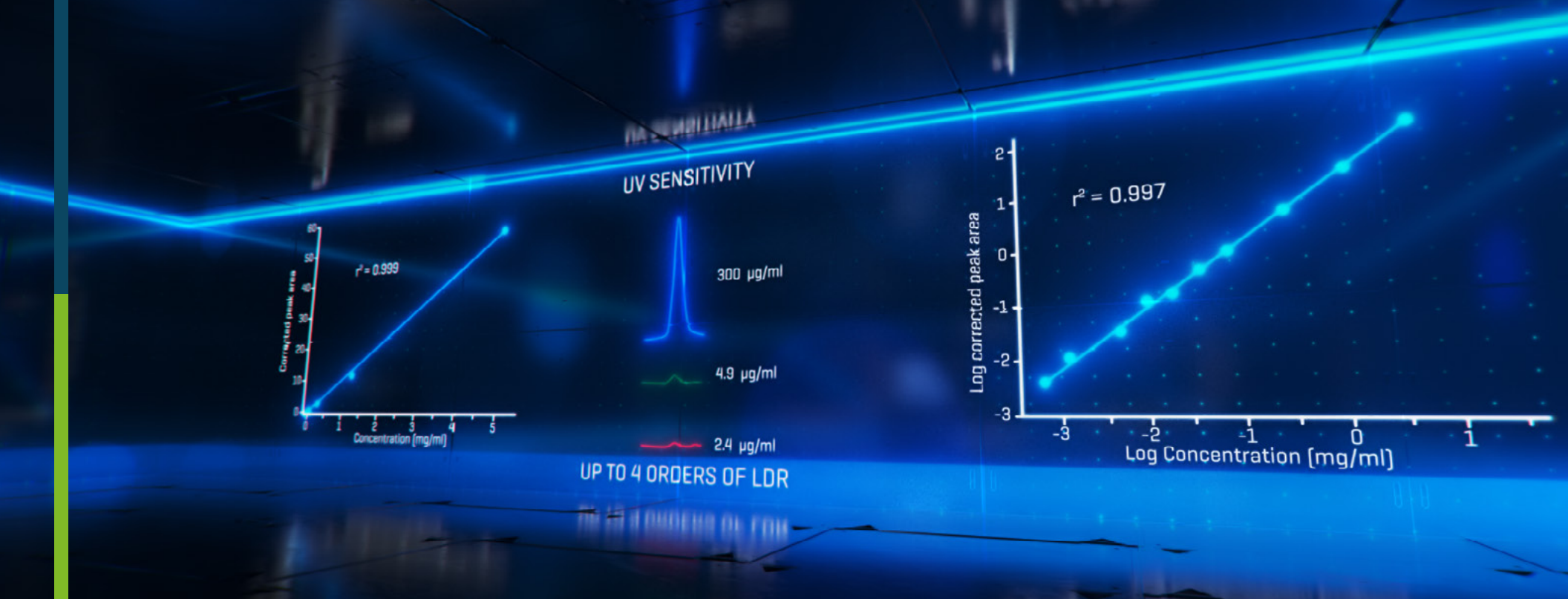


Run more samples and molecules through eight parallel capillaries in a single system.

Existing approaches to detect and characterize changes during development of monoclonal antibodies (mAbs), next-generation therapeutics, and gene therapy products are challenged to deliver the detailed information you need, in the time you need it.

The SCIEX BioPhase 8800 system facilitates parallel processing of up to eight samples simultaneously, while retaining the capability to deliver sensitive CE-SDS and CIEF analysis, enabling uncompromised accuracy for large sample sets and faster time to answers.





Take Charge of your project timelines

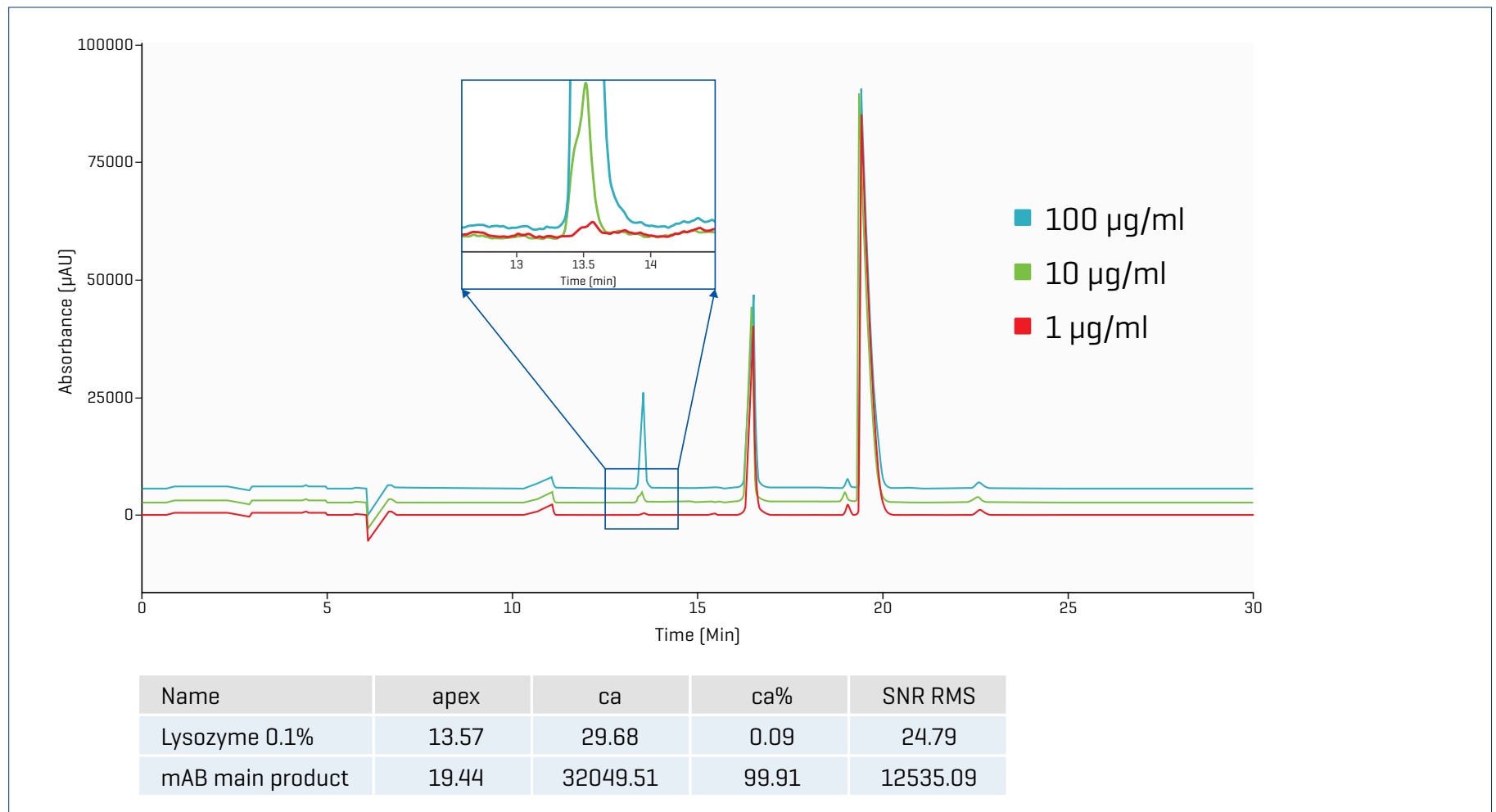
Increase speed to market by making confident decisions quickly, based on sensitive, high-resolution data that you've come to trust from SCIEX.

This speed of analysis helps retain sample integrity between the first sample and the last — delivering consistent, accurate characterization and quantification for large samples sets, FAST.



Automated, and quantitative size and purity analysis

The BioPhase 8800 system capillary electrophoresis sodium dodecyl sulfate [CE-SDS] assay minimizes sample prep and delivers high resolution purity analysis helping you keep up with your increasing workloads.

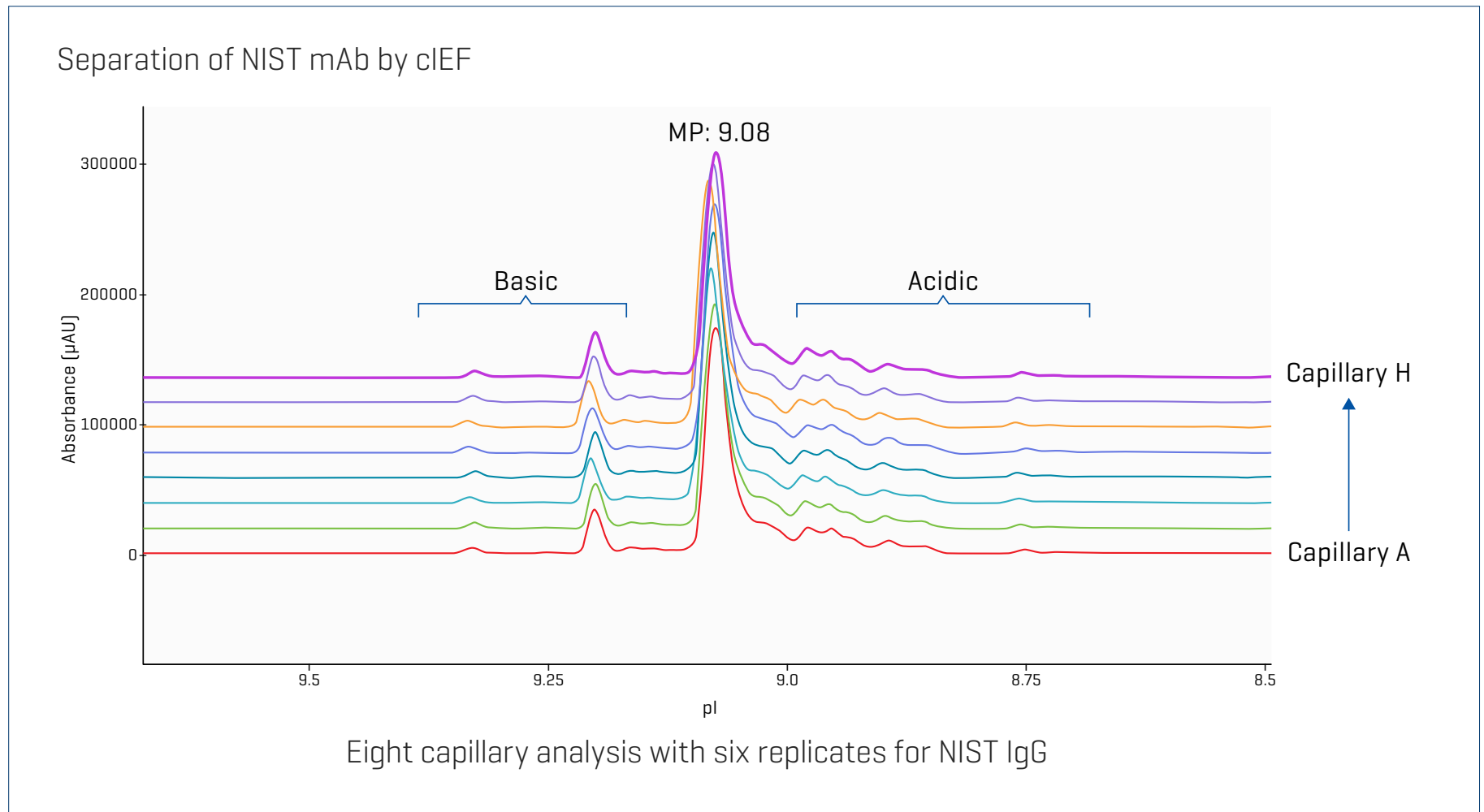


Regulators commonly require quantitation down to 0.1% for impurities. The BioPhase 8880 system with UV detection easily detects 0.1% lysozyme spiked into 1000 µg/ml of IgG.



Charge heterogeneity at warp speed

The BioPhase 8800 system delivers rapid and reproducible charge heterogeneity analysis via multi-capillary isoelectric focusing. Parallel processing of 8 samples simultaneously allows for significant improvements in method development optimization time.



Repeatable and highly sensitive cIEF analysis on the BioPhase 8800 system.



Take your downstream resolution upstream

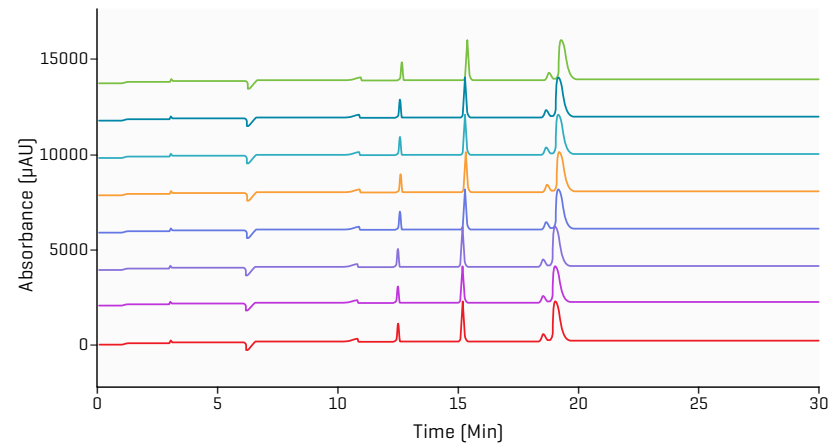
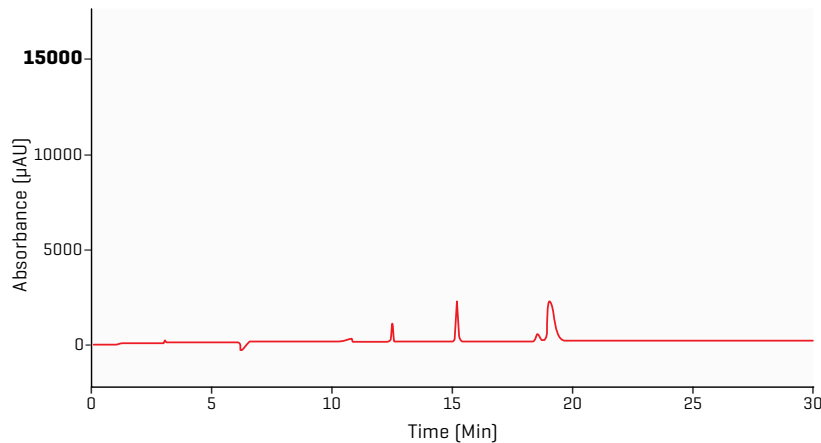
Delivering consistent, comparable data at any scale across the biologic development continuum, the SCIEX BioPhase 8800 system provides high-throughput, high sensitivity analysis for bioprocessing, analytical development and QA/QC, all in one system. Get PA 800 quality data, with up to 8 times the throughput.

Reproducible and comparable at increased throughput

PA 800 Plus

Up to 8 times faster

BioPhase 8800



Comparative of SDS-CGE separations of the reduced mAb sample on the multi-capillary BioPhase 8800 system and the single capillary PA 800 Plus Pharmaceutical Analysis system.

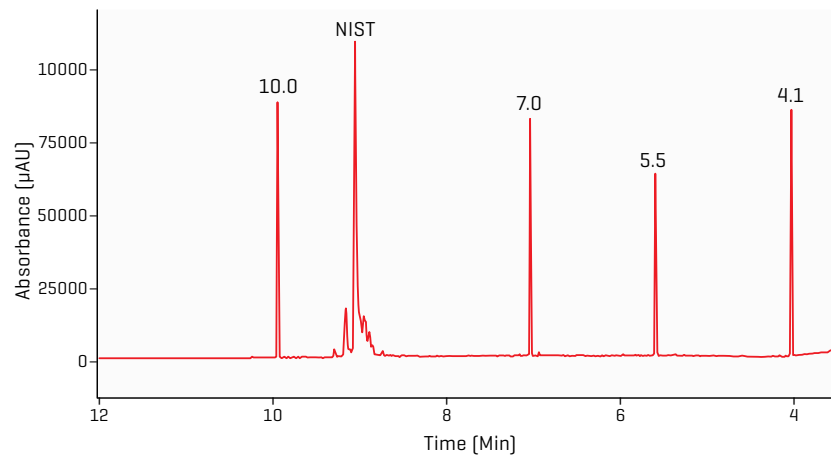


Technology transfer with ease

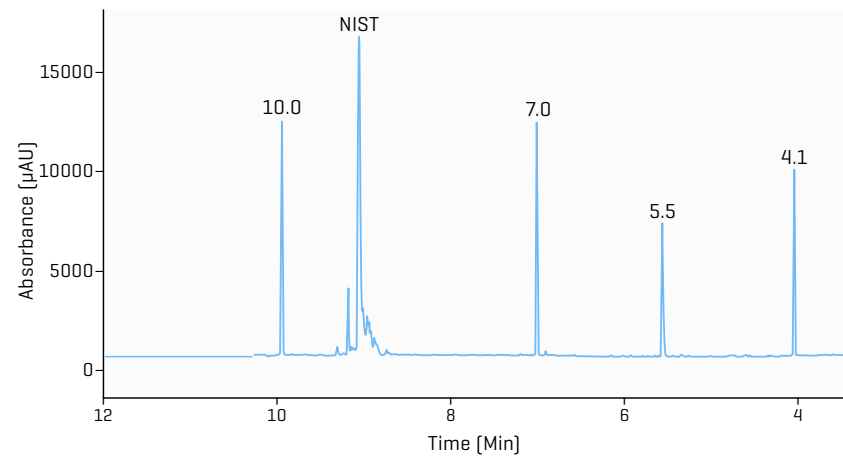
With the capability to functionally enhance characterization workflows, the BioPhase 8800 system represents the bridge between upstream and downstream sampling and processing — laying the foundation for consistent analysis throughout the biopharma development continuum.

Consistent data comparability cIEF

PA 800 Plus



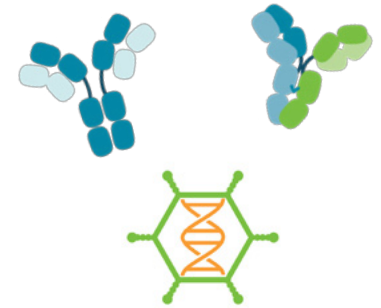
BioPhase 8800



Comparative cIEF analysis of NIST mAb BioPhase 8800 and PA800 Plus.

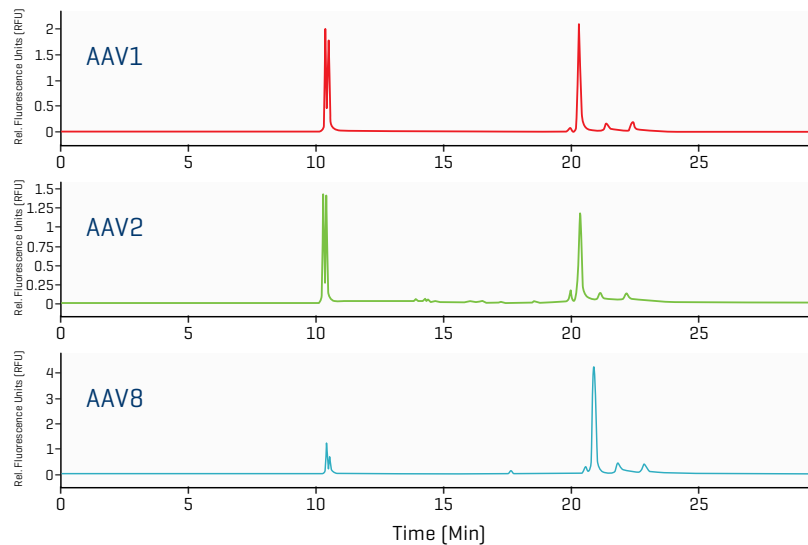


Run multiple applications, for multiple molecules, in a multi-capillary format, on a single platform

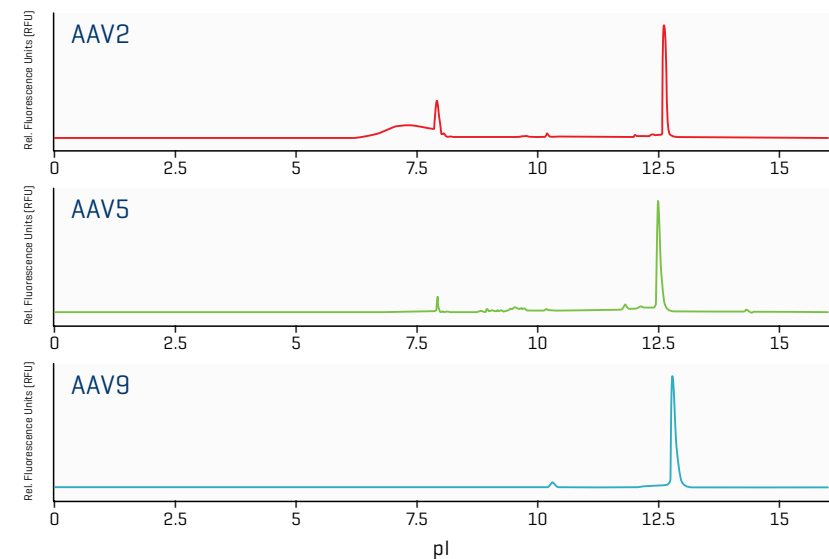


Run multiple applications for characterization of traditional protein therapeutics, next generation biologics and applications in gene therapy such as empty vs. full capsid analysis and genome integrity analysis of AAV.

AAV purity analysis



AAV genome integrity



Quickly and easily evaluate AAV purity and genome integrity on the same platform.



Streamline your workflow

Validated assay kits simplify operation and minimize user error in core industry applications.

Factory-built, multi-capillary, temperature-controlled cartridges help to ensure maximum data reproducibility.



SCIEX Now support network

SCIEX Now

- Manage your instruments.
- Submit and manage support cases, track status and history.
- Access online training courses and articles.
- Be a part of the SCIEX community by submitting questions and comments.
- Receive notifications from SCIEX with content based on your preferences.

→ [CONTACT SCIEX NOW](#)

SCIEX Learning Hub

SCIEX Learning Hub Success Programs provide LC-MS and CE training customized to meet your exact needs.

With a selection of training methods and certifications available, you can build a mass spectrometry program that is most suited to your lab and users.

Starting with a clear understanding of your desired learning outcomes, we aim to help you improve lab productivity and consistency by designing and delivering a program that is focused on knowledge advancement and retention.

→ [FIND OUT MORE](#)

The SCIEX clinical diagnostic portfolio is For In Vitro Diagnostic Use. Rx Only. Product(s) not available in all countries. For information on availability, please contact your local sales representative or refer to <https://sciex.com/diagnostics>. All other products are For Research Use Only. Not for use in Diagnostic Procedures. Trademarks and/or registered trademarks mentioned herein, including associated logos, are the property of AB Sciex Pte. Ltd. or their respective owners in the United States and/or certain other countries [see sciex.com/trademarks]. © 2021 DH Tech. Dev. Pte. Ltd. RUO-MKT-03-13740-A

Headquarters
500 Old Connecticut Path
Framingham, MA 01701 USA
Phone 508-383-7700
sciex.com

International Sales
For our office locations please
call the division headquarters
or refer to our website at
sciex.com/offices



The Power of Precision