

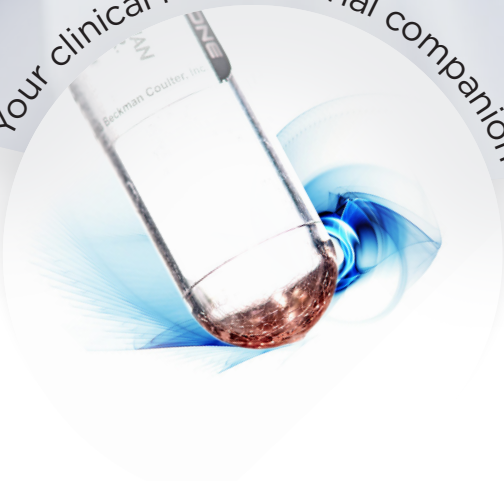


DURACLONE IM

ACCELERATE YOUR PACE IN IMMUNE SYSTEM RESEARCH



Your clinical research trial companion



VISUALIZE
the possibilities.

For Research Use Only - Not for use in Diagnostic procedures

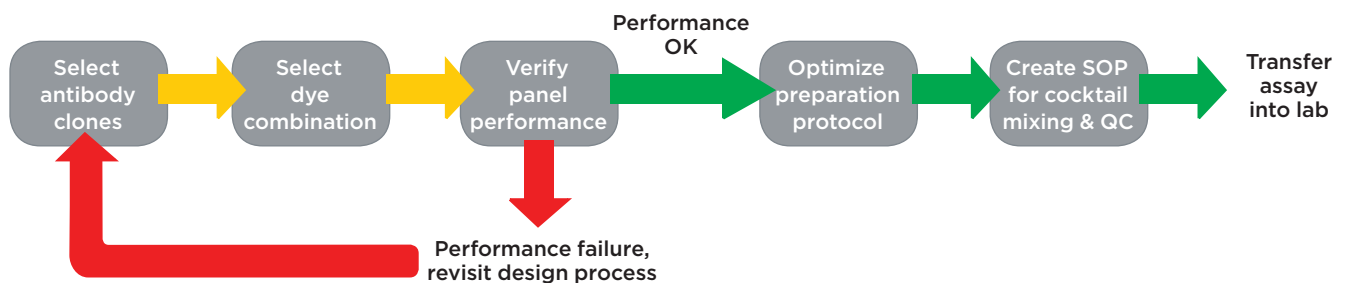


ACCELERATE YOUR PACE IN IMMUNE SYSTEM RESEARCH

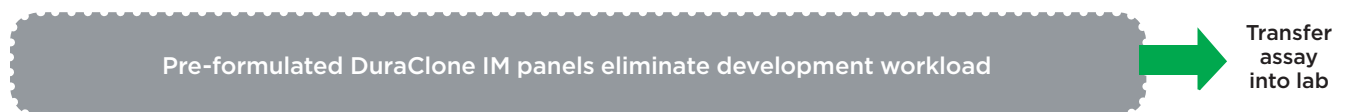
Antibody panel development requires a high level of flow cytometry expertise and may consume critical laboratory resources. Take a leap forward and streamline panel implementation in your laboratory by using expert proven, dry DuraClone IM antibody combinations - the ideal solution for longitudinal and multi-center clinical research trials!

DEVELOPMENT OF ANTIBODY PANELS FOR FLOW CYTOMETRY

... in-house, using liquid single color antibodies



...using DuraClone



DuraClone IM PANELS

Antibody combinations for immune system research

The dry DuraClone IM antibody panels are optimized for the identification and characterization of cells of the human immune system.

- Pre-formulated antibody panels up to 10 colors
- Unitized dry Beckman Coulter proprietary format
- Expert-proven marker combinations
- 25 tests/package including 3 compensation kits

Product	405 nm		488 nm					633 nm				Quality Standard	
	PB	KrO	FITC	PE	ECD	PC5.5	PC7	APC	AF647	AF700	APC-AF700		APC-AF750
IM Phenotyping Basic Tube B53309 (25 tests RUO)	-	CD45	CD16	CD56	CD19	-	CD14	CD4	-	CD8	-	CD3	ISO 9001-2008
IM B Cell Tube B53318 (25 tests RUO)	IgM	CD45	IgD	CD21	CD19	-	CD27	CD24	-	-	-	CD38	
IM T Cell Subsets Tube B53328 (25 tests RUO)	CD57	CD45	CD45RA	CCR7	CD28	PD1	CD27	CD4	-	CD8	-	CD3	
IM Dendritic Cells Tube B53351 (25 tests RUO)	HLA-DR	CD45	CD16	Lineage**	-	CD1c	CD11c	Clec9A	-	-	CD123	-	
IM TCRs Tube B53340 (25 tests RUO)	TCRVδ2	CD45	TCRVδ	TCRαβ	HLA-DR	-	TCRVδ1	CD4	-	CD8	-	CD3	
IM Treg Tube B53346 (25 tests RUO)	Helios	CD45	CD45RA	CD25	-	CD39	CD4	-	FoxP3	-	-	CD3	
IM Granulocytes Tube B88651 (25 tests RUO)	CD15	CD45	CD294	-	CD16	CD33	CD11b	PD-L1	-	-	Lineage***	CD62L	
IM Count Tube C00162 (25 tests RUO)	-	-	CD45	Counting Beads	-	7-AAD	-	-	-	-	-	-	

** CD3 / CD19 / CD20 / CD14 / CD56

*** CD3 / CD14 / CD19 / CD56

PB: Pacific Blue*
KrO: Krome Orange
AF647: Alexa Fluor* 647

AF700: Alexa Fluor* 700
AF750: Alexa Fluor* 750
APC-AF700: APC-Alexa Fluor* 700

APC-AF750: APC-Alexa Fluor* 750

* Alexa Fluor and Pacific Blue are registered trademarks of Molecular Probes, Inc.

MINIMIZE YOUR REAGENT INVENTORY MANAGEMENT

Working with cocktails prepared from liquid antibodies is associated with complex and time consuming inventory management impacting laboratory productivity. DuraClone IM kits simplify inventory management dramatically by replacing multiple different single color reagents with just 1 pre-formulated product.



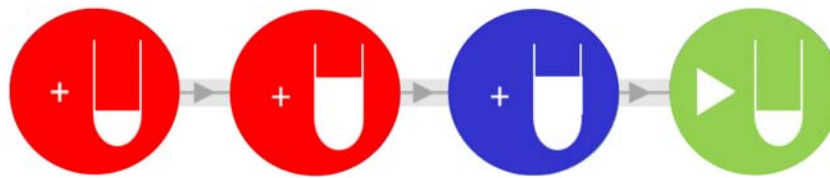
Reagent Inventory Management	Liquid Cocktails from Single Color Reagents	DuraClone IM
QC of reagent lots	Multiple single color reagent lots for each panel	1 reagent lot for each panel
Format	<ul style="list-style-type: none">• Liquid• Mix from single color reagents with varying test volumes and staggered expiry dates	<ul style="list-style-type: none">• Dry• Unitized per test
Reagent waste sources	<ul style="list-style-type: none">• Pipetting failure• Unused remnant volume• Non-stoichiometric consumption of single color reagents	None
Storage / Shipping conditions	Refrigerated	Room temperature

STREAMLINE YOUR WORKFLOW WITH DuraClone IM

In the DuraClone IM kits every assay tube contains a layer with the dried-down antibody panel. The elimination of antibody pipetting shortens the turn-around-time, minimizes human error sources and purges the workflow from repetitive actions that are expensive to automate.



Workflow for DuraClone IM Panels*



Add whole
blood sample
& incubate

Lysis

Wash

Acquire

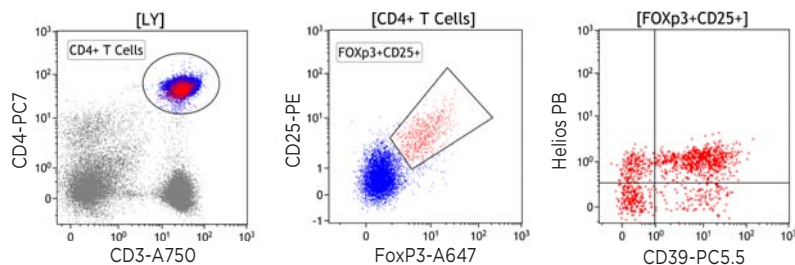
* DuraClone IM Treg uses a modified protocol for intracellular staining, please see the instructions for use for details.

Assay tubes and compensation kits contain identical tandem dye-labeled antibodies to assure accurate and easy compensation.



DATA EXAMPLES FROM THE DuraClone IM TOOLBOX

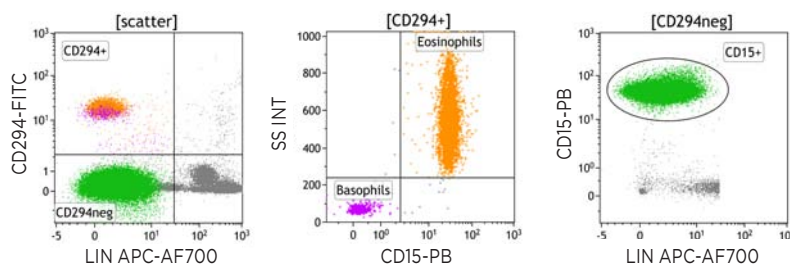
IM Treg



Identification and characterization of FoxP3+ regulatory T cells using a fast permeabilization protocol.

IM Treg Tube	PB	KrO	FITC	PE	ECD	PC5.5	PC7	APC	AF647	APC-AF750	Quality Standard
B53346 (25 tests RUO)	Helios	CD45	CD45RA	CD25	-	CD39	CD4	-	FoxP3	CD3	ISO 9001-2008

IM Granulocytes

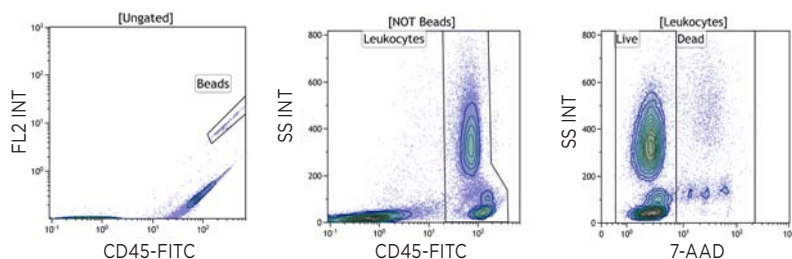


Classifies major granulocyte subpopulations including assessment of maturation- or activation-dependent CD11b, CD16, CD62L and PD-L1 (CD274) co-expression.

IM Granulocytes Tube	PB	KrO	FITC	PE	ECD	PC5.5	PC7	APC	APC-AF700	APC-AF750	Quality Standard
B88651 (25 tests RUO)	CD15	CD45	CD294	-	CD16	CD33	CD11b	PD-L1	Lineage***	CD62L	ISO 9001-2008

*** CD3 / CD14 / CD19 / CD56

IM Count



Absolute counting/viability for whole blood samples and versatile counting reference for all DuraClone IM panels.

IM Count Tube	PB	KrO	FITC	PE	ECD	PC5.5	PC7	APC	AF700	APC-AF750	Quality Standard
C00162 (25 tests RUO)	-	-	CD45	Counting beads	-	7-AAD	-	-	-	-	ISO 9001-2008

MORE DuraClone PANELS

DuraClone IF For Immune Function

The DuraClone IF antibody panels reveal immune function at the single cell level utilizing a streamlined and simplified intracellular staining workflow.

Product	405 nm		488 nm					633 nm			Quality Standard
	PB	KrO	FITC	PE	ECD	PC5.5	PC7	APC	AF700	AF750	
IF T Activation B88649 (25 tests RUO)	CD4	-	IFN γ	TNF α	-	-	IL-2	-	CD8	CD3	ISO 9001-2008
IF T Helper Cell (2017, product configuration not final)	IL-17	-	IFN γ	-	-	-	IL-4	CD4	-	CD3	

DuraClone RE For Rare Event Detection

The DuraClone RE panels enable sensitive detection of rare abnormal cell populations in blood or bone marrow using carefully optimized and highly dosed antibody combinations.

Product	405 nm		488 nm					633 nm			Quality standard
	PB	KrO	FITC	PE	ECD	PC5.5	PC7	APC	APC-AF700	APC-AF750	
RE CLB Tube B80393 (25 tests RUO)	CD20	CD45	CD81	ROR-1	-	CD79b	CD19	CD5	-	CD43	ISO 9001 - 2008
RE PC Tube B80394 (25 tests RUO)	CD38	CD45	CD81	CD27	-	CD19	CD200	CD138	-	CD56	
RE ALB Tube C00163 (25 tests RUO)	-	CD45	CD58	-	CD34	CD10	CD19	-	CD38	CD20	

Choose Beckman Coulter for Benchmark Expertise and Innovation

For over 80 years Beckman Coulter has driven innovation. We remain committed to shaping flow cytometry technology to fit seamlessly into your lab's workflow and to provide an optimal user experience. When you choose a Beckman Coulter solution you receive the high level of expertise, innovation, and quality assurance.



Contact your sales representative



or visit <http://www.beckman.com/coulter-flow-cytometry/duraclone-im>



© 2016 Beckman Coulter, Inc. All rights reserved. Beckman Coulter, the stylized logo, and the Beckman Coulter product and service marks mentioned herein are trademarks or registered trademarks of Beckman Coulter, Inc. in the United States and other countries.

For Beckman Coulter's worldwide office locations and phone numbers, please visit "Contact Us" at beckman.com

FLOW-2395SB03.17