

StarFish™

The space saver

Multi-experiment work station to improve the productivity of your chemistry

260°C



StarFish - the multi-experiment work station

Improve the productivity of your chemistry

What are the benefits?

- Space saving - uses less space than multiple heating and stirring set-ups.
- Increases productivity - multiple positions allow you to heat, stir and reflux experiments in parallel.
- Cost effective - use your existing stirring hotplate and glassware. Eliminate the cost of multiple set-ups.
- Safer, cleaner working. Eliminate oil baths, reduce spills, mess and accidents.
- Flexible - use as many positions as you want.
- Easy to use and quick to assemble.
- Compact - store spare components in a drawer and not on the bench.

Gas/Vacuum Manifold

- Even distribution to up to five positions or vessels
- Quick-release connectors
- Leak-proof shut-off valves

Central Support Rod

- Single or two piece options
- Screws into base plate
- Stainless steel

Universal 3 or 5-Way Telescopic Clamps

- Adjusts to hold a wide variety of glassware
- Velcro or rubber straps

Water Manifold

- Distributes water to up to five condensers simultaneously
- Quick-release connectors
- Leak-proof shut-off valves

500ml MonoBlock and Clamp

- Accepts 3 x 500ml flasks
- Universal 3-way telescopic clamp

MonoBlocks or PolyBlock

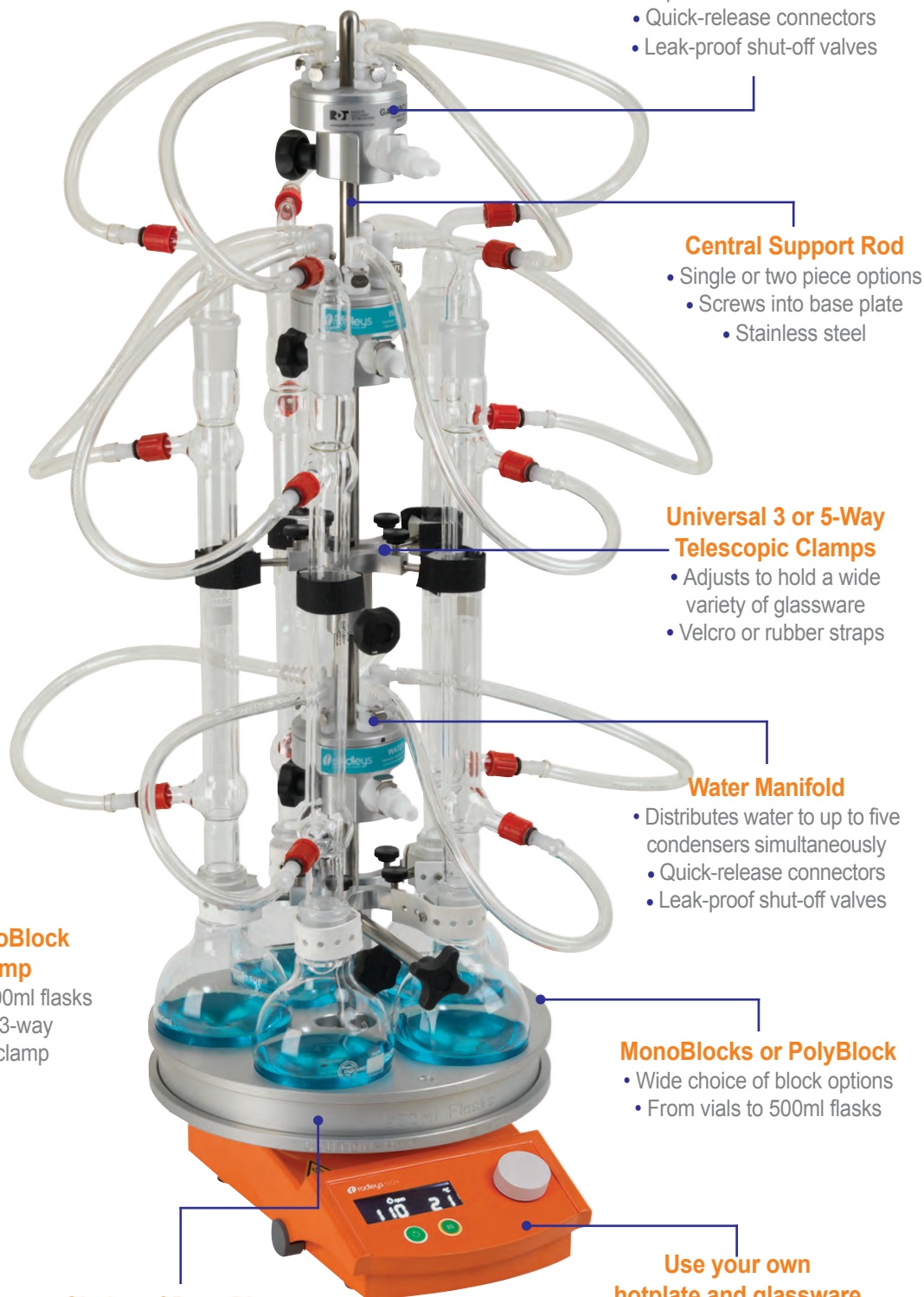
- Wide choice of block options
- From vials to 500ml flasks

Choice of Base Plates

- For round or square hotplates
- Optional handles

Use your own hotplate and glassware

- Compatible with all popular brands of stirring hotplate



StarFish - for popular heating and stirring applications

Synthesis, distillation, extraction

StarFish Applications

Whether you want to heat and stir, or perform more complex experiments, StarFish really can make your life easier and improve productivity. StarFish has proven popular in the following laboratories:

- Teaching and university
- Chemistry and biochemistry
- Environmental analysis
- Food testing
- Analytical

StarFish replaces the need for large electromantles



From space-taker to space-saver

260°C



Heating and Stirring

Starfish is ideal for heating and/or stirring all types of vials, test tubes, conical and round bottom flasks.



Synthesis

Suitable for standard round bottom flasks from 5ml to 500ml, as well as 1 inch and 24mm boiling tubes. Hold condensers up to 70mm in diameter.



Distillation

Configure for all common types of distillation including; binary and multi-component, vacuum, fractional and azeotropic methods.

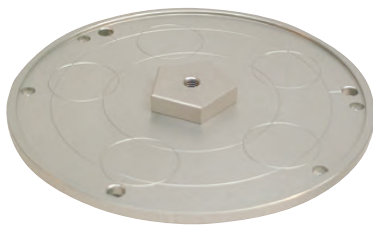


Extraction

Replace large, inflexible extraction apparatus. Using standard round bottom flasks from 5ml to 500ml and glassware assemblies for soxhlet, liquid-liquid, reverse liquid-liquid and reflux extraction methods.

StarFish - modular and versatile

Use your existing hotplate and glassware



Base plates feature locating circles so beakers and conical flasks can be placed directly on to the top plate

Base Plates - for round or square hotplates

StarFish base plates fit securely on all popular brands of stirring hotplate with both round or square top plates and are designed to maximise thermal contact with the heated top plate.

Lifting handles - insulated

Optional insulated handles can be screwed to the base plate, allowing the safe removal of the base plate from the hotplate whilst still hot.



Support rods - stainless steel

Stainless steel 12mm \varnothing x 650mm long. Rods screw directly into base plate.

Base plates, handles and rods



RR95010
Base Plate for 135mm diameter (for Radleys & IKA)



RR95020
Base Plate for 145mm diameter (for Heidolph)



RR95030
Base Plate for 150mm diameter (for Eylea)



RR95040
Base Plate for 184mm x 184mm (for Cimarec)



RR95050
Base Plate for 160mm x 160mm (for Stuart SD)



RR95100
Base Plate Handles (Pair)



RR95666
12 x 650mm Split Rod

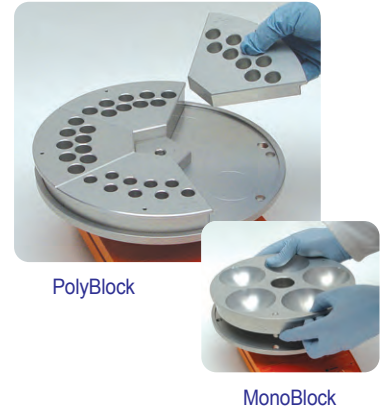
RR95665
12 x 650mm Rod

StarFish - for vials, test tubes and flasks

Mix'n'match the components you need, when you need them

MonoBlocks and PolyBlocks

- Chemical resistant anodised aluminium for rapid heating of vials, tubes and flasks up to 260°C
- MonoBlocks are single blocks with multiple wells all of the same size.
- PolyBlocks are smaller segments that can be mixed to accommodate any combination of vessel (5 per StarFish).
- All blocks are stackable to maximize lab space, have a 3.5mm hole for a temperature probe and are individually labelled for easy identification.



PolyBlock

MonoBlock

Reducing inserts for flasks

- Aluminium reducing inserts for flasks from 5ml to 150ml fit in 250ml wells in PolyBlocks and MonoBlocks.

Aluminium reducing inserts with PolyBlocks



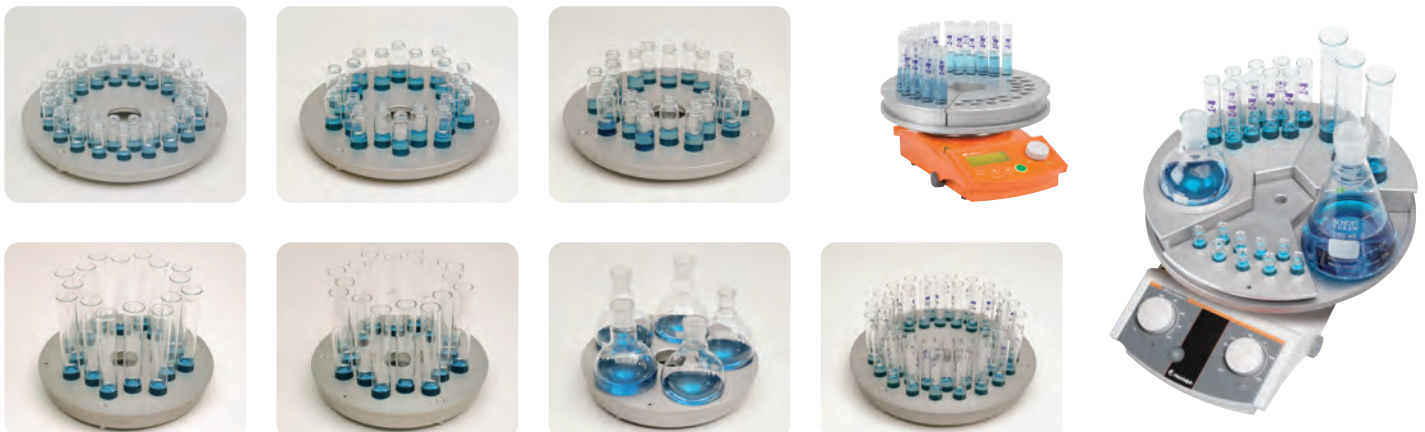
MonoBlocks for test tubes and vials



PolyBlocks for test tubes and vials



MonoBlocks, PolyBlocks and aluminium inserts for flasks



StarFish - manifolds and clamps

Manifolds provide quick, convenient and tidy water/gas connections



Gas Manifold

Water Manifold

Distribution Manifolds for Gas/Vacuum and Water

- Make the connection of water or gas/vacuum to multiple vessels quick and easy
- Manifolds can be used independently of StarFish
- Screw-tightening allows location of manifolds in any position on a standard 12mm \varnothing support rod
- Quick-release gas/fluid connectors
- Leak-proof shut-off valves close when the couplings are parted



Water manifold

Allows coolant from a single source to be evenly distributed to up to five condensers and then re-combined to one outlet pipe. Two manifolds are used in each set-up.

Gas/vacuum manifold

Allows gas or vacuum from a single source to be evenly distributed to up to five positions or vessels. (Does not control or regulate gas/vacuum flow)

Manifolds and clamps



RR95510
Gas/Vacuum
Manifold



RR95500
Water
Manifold



RR95410
5-way Clamp with Silicone
Strap and Long Handle



RR95400
5-way Clamp
with Velcro



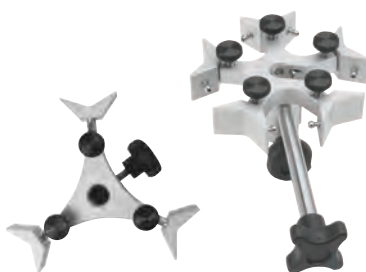
RR95415
3-way Clamp with Silicone
Strap and Long Handle



RR95405
3-way Clamp
with Velcro



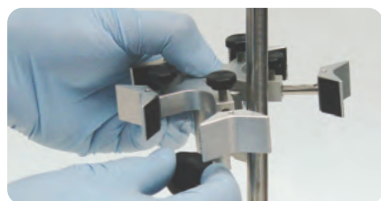
RR95444
Viton Rubber
Straps



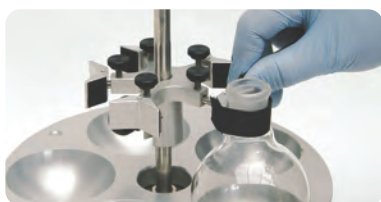
Universal Clamps

3 and 5-way Universal Clamps are designed to safely support flasks, condensers and other glassware. They feature adjustable telescopic arms and flexible straps to hold glassware.

- Designed to be raised or lowered with glassware in-situ
- Choice of Velcro or rubber supporting straps
- Rubber straps grip glassware from 15 to 70mm in diameter - ideal for lifting vessels
- 5-way clamp features a slot which allows it to be located on to the support rod from the side
- Velcro straps are designed specifically not to grip glassware tightly, allowing condensers to slide through the strap, whilst still being safely restrained
- Optional Viton rubber straps offer superior chemical resistance



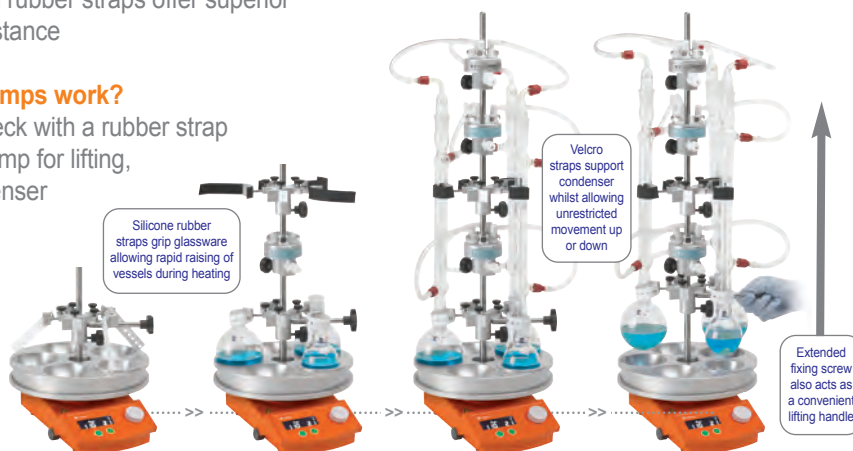
Side slot on 5-way clamp allows easy fitting



Velcro holds glassware securely

How do the clamps work?

Grip the flask neck with a rubber strap on the lower clamp for lifting, whilst the condenser above slides through the Velcro strap on the upper clamp.



StarFish - accepts standard glassware

Versatile design holds glassware of different sizes and shapes



Accessory Glassware

- StarFish blocks are designed to accept standard laboratory glassware
- For your convenience we offer a range of standard glassware
- StarFish will also accommodate glassware from the Radleys' Carousel 12 Plus, 6 Plus and GreenHouse Plus

Test tubes, flasks, condensers and soxhlets

RRR94260 Adapter 19/26	RR94115 5ml 10/19 socket	RR94105 10ml 10/19 socket	RR94095 25ml 19/26 socket	RR94085 50ml 19/26 socket	RR94075 100ml 19/26 socket	RR94065 150ml 19/26 socket	RR94055 250ml 19/26 socket	RR94250 250ml Azeotropic Reaction Flask 24/29 with 19/26 Sidearm	RR94040 500ml 24/29 socket
RR94265 Adapter 24/29	RR94110 5ml 14/23 socket	RR94100 10ml 14/23 socket	RR94090 25ml 24/29 socket	RR94080 50ml 24/29 socket	RR94070 100ml 24/29 socket	RR94060 150ml 24/29 socket	RR94050 250ml 24/29 socket		RR94145 500ml 24/29 socket + 19/26 sidearm
RR94270 Adapter 29/32			RR94165 25ml 14/23 socket + 14/23 sidearm	RR94160 50ml 14/23 socket + 14/23 sidearm	RR94155 100ml 24/29 socket + 19/26 sidearm		RR94150 250ml 24/29 socket + 19/26 sidearm		
RR94275 Adapter 34/35									

RR94230 20ml Soxhlet 19/26	RR94235 40ml Soxhlet 24/29	RR94240 60ml Soxhlet 24/29	RR94245 100ml Soxhlet 24/29	RR94210 Allihn Condenser 250mm 19/26	RR94215 Allihn Condenser 250mm 24/29	RR94220 Allihn Condenser 250mm 29/32	RR94195 Coil Condenser 165mm 19/26	RR94200 Coil Condenser 165mm 24/29	RR94205 Coil Condenser 165mm 29/32
RR94030 Test Tube 12mm ø x 100mm without rim	RR94020 Test Tube 16mm ø x 100mm without rim	RR94010 Test Tube 24mm ø x 150mm without rim							
RR94025 with rim	RR94015 with rim	RR94005 with rim							

PTFE Magnetic Stirring Bars

- A massive choice of stirring bars, suitable for the smallest vials through to the largest flask

Magnetic stirring bars

RR98075 Cross Shape Stirring Bar 10mm	RR98091 Cross Shape Stirring Bar 16.5mm RE	RR95910 Cross Shape Stirring Bar 30mm	RR95905 Cylindrical Stirring Bar 8mm	RR98113 Cylindrical Stirring Bar 12mm RE	RR98070 Octagonal Stirring Bar 13mm	RR99607 Pivot Ring Stirring Bar 12x4.5mm	RR98071 Pivot Ring Stirring Bar 12x6mm	RR99613 Pivot Ring Stirring Bar 15mm	RR98096 Elliptical Stirring Bar 10mm RE	RR98097 Elliptical Stirring Bar 15mm RE	RR99064 Elliptical Stirring Bar 25mm RE	RR95920 Oval Stirring Bar 40mm	RR95921 Oval Stirring Bar 50mm

RR95915 Hub Stirring Bar 45mm	RR95916 Hub Stirring Bar 62mm	RR95917 Hub Stirring Bar 70mm	RR95925 Spinning Stirring Bar 31mm	RR95926 Spinning Stirring Bar 44mm	RR95927 Spinning Stirring Bar 57mm	RR98095 Stirring Bar Evaluation Kit	RR98094 PTFE Magnetic Stirring Bar Retriever (350mm)	RR98906 Black Lab Marker Pen	RR99061 Reaction Flask Support Ring

"StarFish delivered a simple and versatile alternative to five individual heating mantle set-ups, improving the student experience and making better use of laboratory facilities and space."

Alan Hague, University of Bradford



StarFish ordering information

Cat No	Description	Pk Qty
Base Plates, Handles & Support Rods		
RR95010	StarFish Base Plate 135mm (for Radleys & IKA)	1
RR95020	StarFish Base Plate 145mm (for Heidolph)	1
RR95030	StarFish Base Plate 150mm (for Eyela)	1
RR95040	StarFish Base Plate 184 x 184mm (for Cimarec)	1
RR95050	StarFish Base Plate 160 x 160mm (for Stuart - SD models)	1
RR95100	StarFish Base Plate Handles (Pair)	1
RR95665	650mm Rod	1
RR95666	650mm Split Rod	1
RR95980	Adjustable Spanner	1
MonoBlocks		
RR95125	MonoBlock for 3x 500ml Flasks	1
RR95130	MonoBlock for 5 x 250ml Flasks	1
RR95135	MonoBlock for 16 x 25mm Tubes	1
RR95140	MonoBlock for 16 x 24mm Tubes	1
RR95145	MonoBlock for 40 x 16mm Tubes	1
RR95150	MonoBlock for 40 x 12mm Tubes	1
RR95152	MonoBlock for 16 x 28mm Vials	1
RR95155	MonoBlock for 20 x 21mm Vials (4 dram)	1
RR95160	MonoBlock for 40 x 17mm Vials (2 dram)	1
RR95165	MonoBlock for 40 x 15mm Vials (1 dram)	1
RR95170	MonoBlock for 40 x 12mm Vials (2ml)	1
PolyBlocks		
RR95230	PolyBlock for 1 x 250ml Flask	1
RR95235	PolyBlock for 3 x 25mm Tubes	1
RR95240	PolyBlock for 3 x 24mm Tubes	1
RR95245	PolyBlock for 9 x 16mm Tubes	1
RR95250	PolyBlock for 9 x 12mm Tubes	1
RR95252	PolyBlock for 3 x 28mm Vials	1
RR95255	PolyBlock for 3 x 21mm Vials (4 dram)	1
RR95260	PolyBlock for 7 x 17mm Vials (2 dram)	1
RR95265	PolyBlock for 9 x 15mm Vials (1 dram)	1
RR95270	PolyBlock for 9 x 12mm Vials (2ml)	1
Reducing Inserts		
RR95330	150ml Flask Insert	1
RR95335	100ml Flask Insert	1
RR95340	50ml Flask Insert	1
RR95345	25ml Flask Insert	1
RR95350	10ml Flask Insert	1
RR95355	5ml Flask Insert	1
Universal Clamp		
RR95405	Telescopic 3-way Clamp with Velcro	1
RR95415	Telescopic 3-way Clamp with Silicone Strap and Long Handle	1
RR95400	Telescopic 5-way Clamp with Velcro	1
RR95410	Telescopic 5-way Clamp with Silicone Strap and Long Handle	1
Universal Clamp Spares & Accessories		
RR95450	RR95400 to RR95410 Conversion Kit	1
RR95412	Clamp Long Handle	1
RR95430	Self Adhesive Velcro Pads	10
RR95432	Strap Securing Pins	10
RR95440	Velcro Loop Strips 200mm	5
RR95442	Silicone Strap 200mm	5
RR95444	Viton Strap 200mm	5
Distribution Manifolds		
RR95500	Water Manifold with connectors	1
RR95510	Gas/Vacuum Manifold with connectors	1
RR95535	Tubing for Manifold outlets 15m x 6.4mm	1
RR95540	Tubing for Manifold inlets 15m x 8mm	1
Stirring Bars		
RR98075	Cross Shape Stirring Bar 10mm	40
RR98091	Cross Shape Stirring Bar 16.5mm RE	20
RR95910	Cross Shape Stirring Bar 30mm	5
RR95905	Cylindrical Stirring Bar 8mm	40
RR98113	Cylindrical Stirring Bar 12mm RE	20
RR98070	Octagonal Stirring Bar 13mm	20
RR99607	Pivot Ring Stirring Bar 12x4.5mm	40
RR98071	Pivot Ring Stirring Bar 12x6mm	40
RR99613	Pivot Ring Stirring Bar 15mm	40
RR98096	Elliptical Stirring Bar 10mm RE	40
RR98097	Elliptical Stirring Bar 15mm RE	20
RR99064	Elliptical Stirring Bar 25mm RE	10
RR95920	Oval Stirring Bar 40mm	5
RR95921	Oval Stirring Bar 50mm	5
RR95915	Hub Stirring Bar 45mm	1
RR95916	Hub Stirring Bar 62mm	1
RR95917	Hub Stirring Bar 70mm	1
RR95925	Spinning Stirring Bar 31mm	1
RR95926	Spinning Stirring Bar 44mm	1
RR95927	Spinning Stirring Bar 57mm	1
RR98095	PTFE Magnetic Stirring Bar Evaluation Kit	30
RR71200	PTFE Magnetic Stirring Bar Evaluation Kit - for flasks	10
RR98094	PTFE Magnetic Stirring Bar Retriever 350mm	1
RR98114	Magnetic Stirring Bar Restrainer	1

Cat No	Description	Pk Qty
Test Tubes		
RR94005	24x150 T/Tube with Rim (Medium Wall)	100
RR94010	24x150 T/Tube without Rim (Medium Wall)	100
RR94015	16x100 T/Tube with Rim (Medium Wall)	100
RR94020	16x100 T/Tube without Rim (Medium Wall)	100
RR94025	12x100 T/Tube with Rim (Medium Wall)	100
RR94030	12x100 T/Tube without Rim (Medium Wall)	100
Round Bottom Flasks		
RR94040	500ml Round Bottom Flask 24/29 Socket	5
RR94050	250ml Round Bottom Flask 24/29 Socket	5
RR94055	250ml Round Bottom Flask 19/26 Socket	5
RR94060	150ml Round Bottom Flask 24/29 Socket	5
RR94065	150ml Round Bottom Flask 19/26 Socket	5
RR94070	100ml Round Bottom Flask 24/29 Socket	5
RR94075	100ml Round Bottom Flask 19/26 Socket	5
RR94080	50ml Round Bottom Flask 24/29 Socket	5
RR94085	50ml Round Bottom Flask 19/26 Socket	5
RR94090	25ml Round Bottom Flask 24/29 Socket	5
RR94095	25ml Round Bottom Flask 19/26 Socket	5
RR94100	10ml Round Bottom Flask 14/23 Socket	5
RR94105	10ml Round Bottom Flask 10/19 Socket	5
RR94110	5ml Round Bottom Flask 14/23 Socket	5
RR94115	5ml Round Bottom Flask 10/19 Socket	5
Round Bottom Flasks with Sidearm		
RR94145	500ml R/B Flask 24/29 with 19/26 Sidearm	1
RR94150	250ml R/B Flask 24/29 with 19/26 Sidearm	2
RR94155	100ml R/B Flask 24/29 with 19/26 Sidearm	2
RR94160	50ml R/B Flask 14/23 with 14/23 Sidearm	2
RR94165	25ml R/B Flask 14/23 with 14/23 Sidearm	2
Azeotropic Flask		
RR94250	250ml Azeotropic Reaction Flask 24/29 with 19/26 Sidearm	1
Condensers		
RR94180	Liebig Condenser 208mm 19/26	1
RR94185	Liebig Condenser 250mm 24/29	1
RR94190	Liebig Condenser 250mm 29/32	1
RR94195	Coil Condenser 165mm 19/26	1
RR94200	Coil Condenser 165mm 24/29	1
RR94205	Coil Condenser 165mm 29/32	1
RR94210	Allihn Condenser 250mm 19/26	1
RR94215	Allihn Condenser 250mm 24/29	1
RR94220	Allihn Condenser 250mm 29/32	1
Soxhlet		
RR94230	20ml Soxhlet 19/26 Cone 24/29 Socket	1
RR94235	40ml Soxhlet 24/29 Cone 29/32 Socket	1
RR94240	60ml Soxhlet 24/29 Cone 34/25 Socket	1
RR94245	100ml Soxhlet 24/29 Cone 40/38 Socket	1
Right Angle Adapters		
RR94260	Adapter B19 Cone to SQ13 Screwthread	5
RR94265	Adapter B24 Cone to SQ13 Screwthread	5
RR94270	Adapter B29 Cone to SQ13 Screwthread	5
RR94275	Adapter B34 Cone to SQ13 Screwthread	5
Carousel Stirring Hotplates		
RR91200	Carousel Standard Stirring Hotplate 230v UK Plug	1
RR91203	Carousel Tech Stirring Hotplate 230v UK Plug	1
RR91206	Carousel Tech Stirring Hotplate + Pt1000 230v UK Plug	1
RR91291	Carousel Tech Package 230v UK Plug	1
<i>Includes Tech Stirring Hotplate, Pt1000 S/Steel Sensor, Support Rod & Sensor Clamp.</i>		
RR91204	Carousel Advanced Stirring Hotplate 230v UK Plug	1
RR91205	Carousel Advanced Stirring Hotplate + Pt1000 230v UK Plug	1
<i>Stirring Hotplates are available in other voltages. Please add /EURO or /USA to the end of Cat No.</i>		
Temperature Controllers & Sensors		
RR91226	Pt1000 S/S Sensor for Tech & Advanced Stirring Hotplates	1
RR91227	Pt1000 Glass Coated Sensor for Tech & Advanced Stirring Hotplates	1
RR91228	Temperature Sensor Holder	1
RR91229	Support Rod (13mm x 425mm)	1
RR71127	Support Rod (13mm x 500mm)	1
RR71125	Support Rod (13mm x 340mm)	1
RR71120	Support Rod Hotplate Adapter (extension plate)	1

© Radleys (R.B.Radley & Co Ltd) Nov 2013



Shire Hill, Saffron Walden,
Essex, CB11 3AZ, United Kingdom.
t: +44 1799 513320
f: +44 1799 513283
e: sales@radleys.co.uk

www.radleys.com

World leaders in innovative productivity tools for chemists